

# LES RIVES D'ARGENTIÈRE

## CHAMONIX MONT-BLANC

★ ★ ★ ★ ★

### FIND US

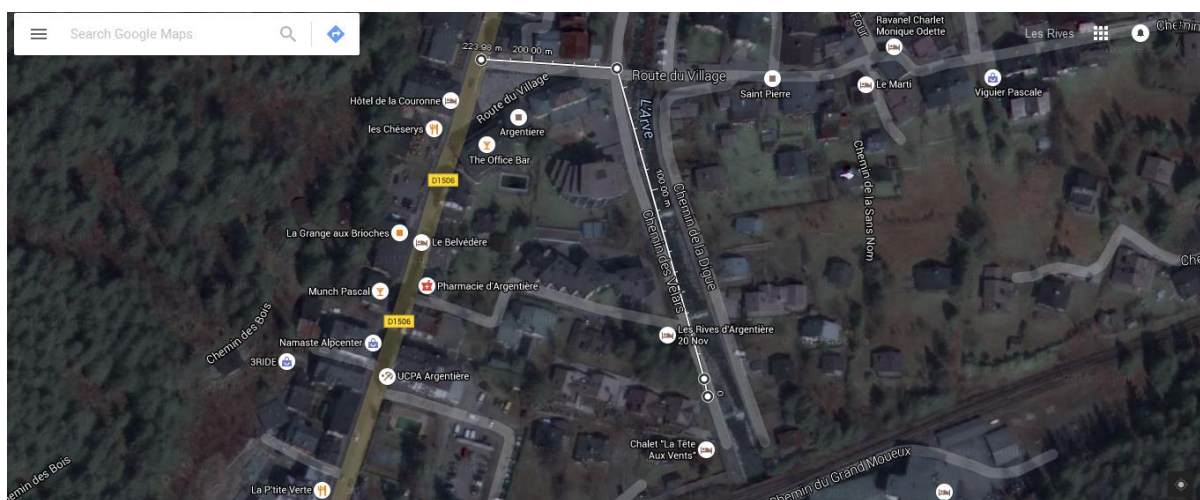
- GPS: **Latitude:** 45.983033 | **Longitude:** 6.928134

- Address: 162 Chemin des Velars. Chamonix. 74400

Les Rives d'Argentière has two entrances one in Summer and one in Winter.

### SUMMER DIRECTIONS

Enter **Argentière** and turn into **Route Du Village**, pass the pharmacy at the **river bridge** (do not cross it) **turn right**. Continue down the gravel road to the end we are on the right.



### WINTER DIRECTIONS

Enter Argentière and drive into the SNCF Argentière **Train Station Car Park**. Head to the **back left corner** and next to the entrance to the UCPA, you will see a gravel road. Drive along this all the way to the end at the river turn left we are on the left.

